



## Rtg og CT av kne i en akutt setting

Øyvind Fidje

Overlege ved enhet for muskel - skjelettradiologi, OUS  
Ullevål sykehus



## Indikasjoner

- Traume
  - skjelettskade
    - kasuistikker

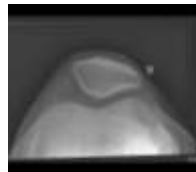


## Radiografisk teknikk

- AP - ekstendert kne
- Sidebildet – fleksjon, 20-30 grader
- Tunnelbilde – intercondylær notch



- Patella
  - Patella view
  - Skråbilder



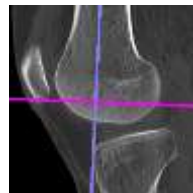
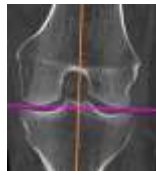
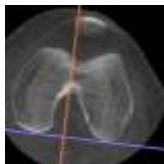
## Normalt kne





## CT – radiografisk teknikk

- **Aksialplanet:** Cor/sag akse vinklet på bakre femurkondyler.
- **Cornalplanet:** Ax/sag akse vinklet i forhold til femur eller tibia, avh av hvor patologien sitter
- **Sagittalplanet:** Ax/cor akse vinklet etter tibias bakkant ved tibiapatologi. Eller: Ax/cor akse vinklet etter femur ved femurpatologi



## Kasuistikker





## Patellafraktur – mest vanlige fraktur i kneet



Patella



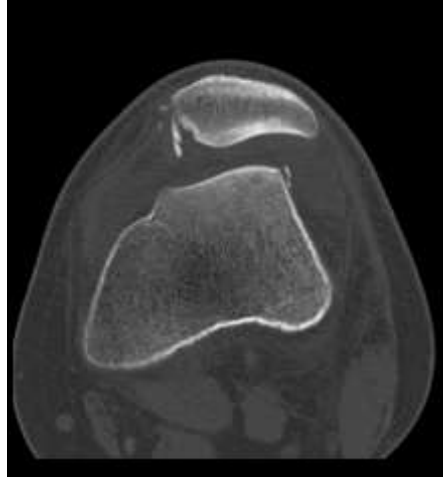
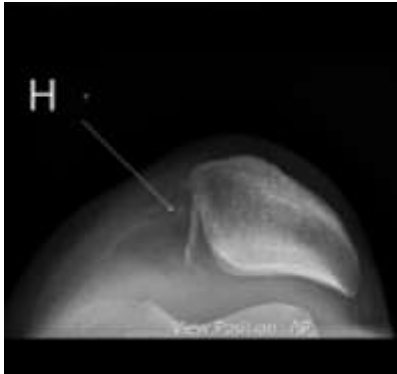
Extra articular	<p><b>34-A1</b> avulsion</p>  <p><a href="#">f</a> <a href="#">▶ proceed</a></p>	<p><b>34-A2</b> isolated body</p>  <p><a href="#">f</a> <a href="#">▶ proceed</a></p>	
Partial articular	<p><b>34-B1</b> vertical, lateral</p>  <p><a href="#">f</a> <a href="#">▶ proceed</a></p>	<p><b>34-B2</b> vertical, medial</p>  <p><a href="#">f</a> <a href="#">▶ proceed</a></p>	
Complete articular	<p><b>34-C1</b> transverse</p>  <p><a href="#">f</a> <a href="#">▶ proceed</a></p>	<p><b>34-C2</b> transverse plus second fragment</p>  <p><a href="#">f</a> <a href="#">▶ proceed</a></p>	<p><b>34-C3</b> complex</p>  <p><a href="#">f</a> <a href="#">▶ proceed</a></p>

fraktur i





## Patellaluksasjon



## Patella bipartita





## Tibiaplatåfrakturer

mest vanlige etter patellafrakturer



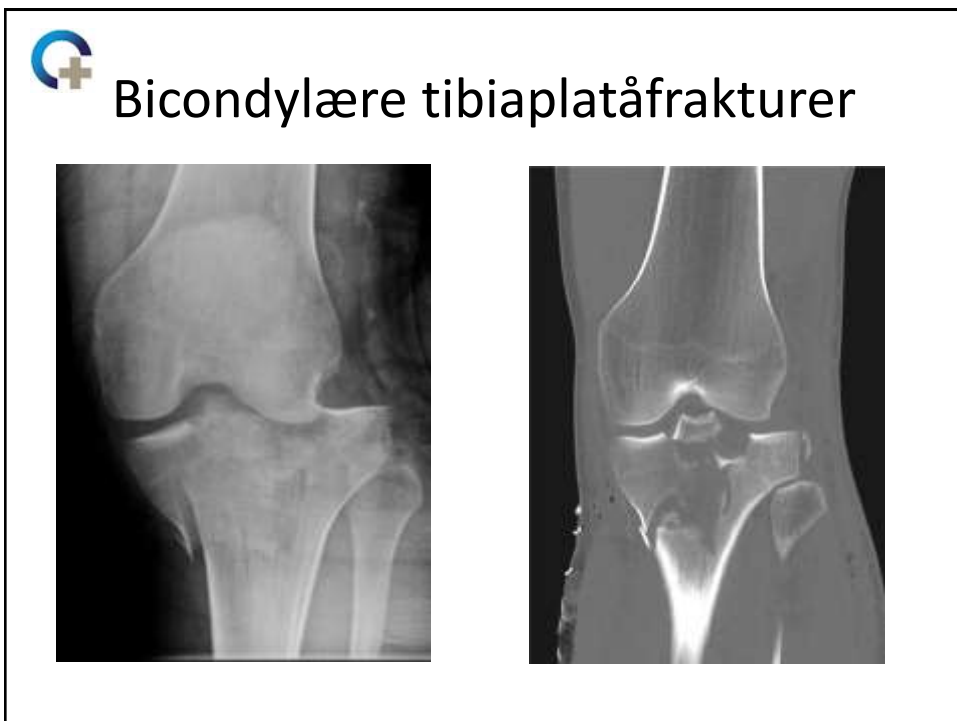
Extra articular	41-A1 avulsion	41-A2 metaphyseal simple	41-A3 metaphyseal multifragmentary
Partial articular	41-B1 pure split	41-B2 pure depression	41-B3 split-depression
Complete articular	41-C1 simple, metaphyseal simple	41-C2 single, metaphyseal multfragmentary	41-C3 multifragmentary





# Lipohemartrose









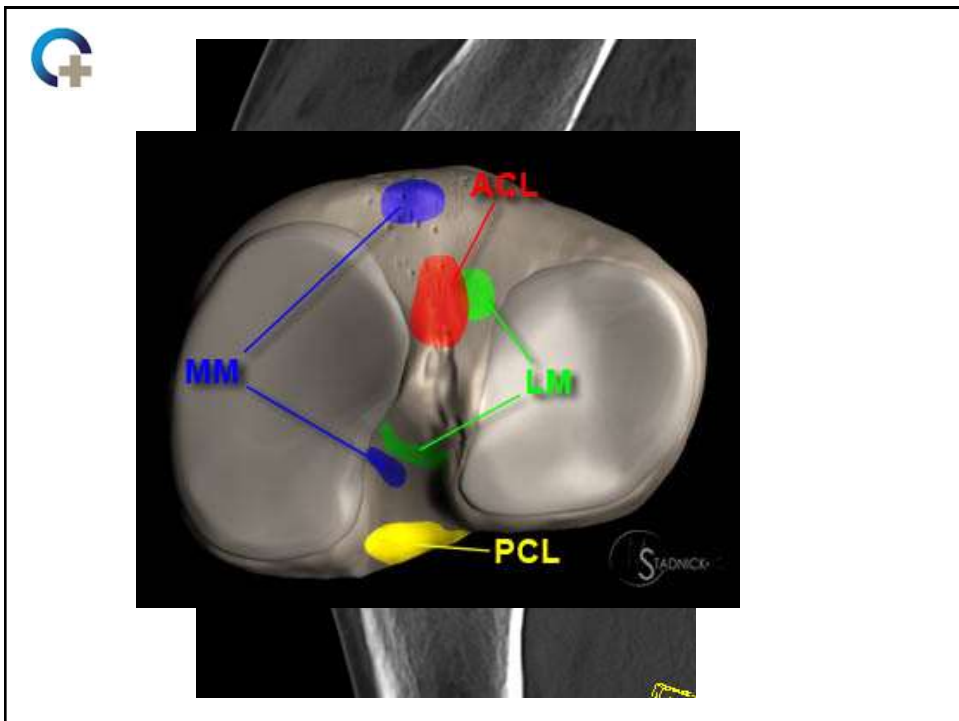


## Segond fraktur



## Avulsjonsfraktur av ACL







## Supracondylær femurfraktur

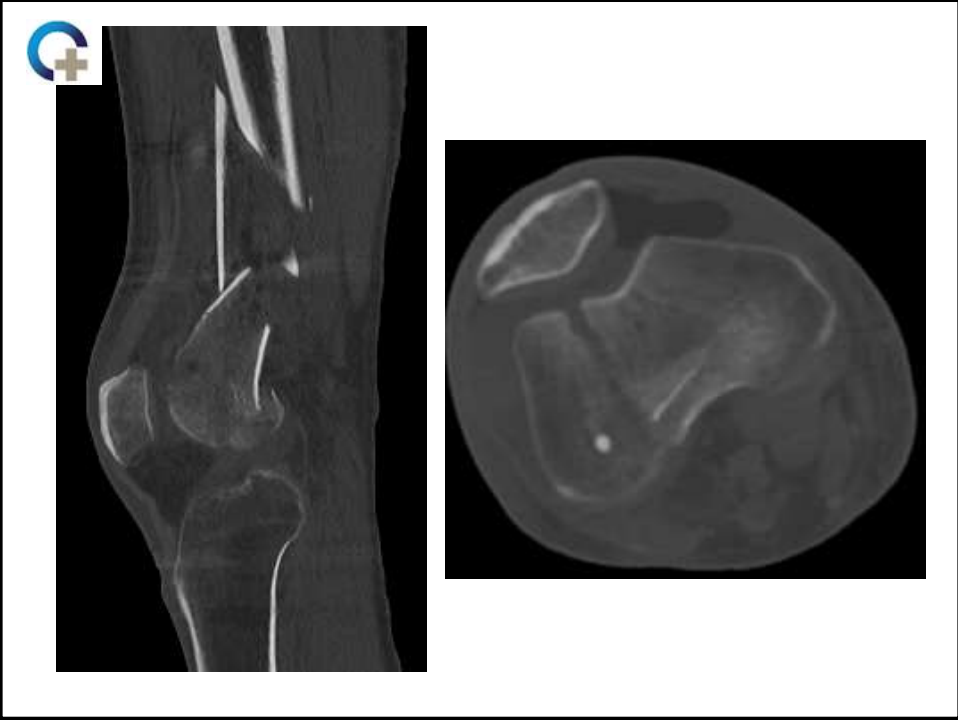


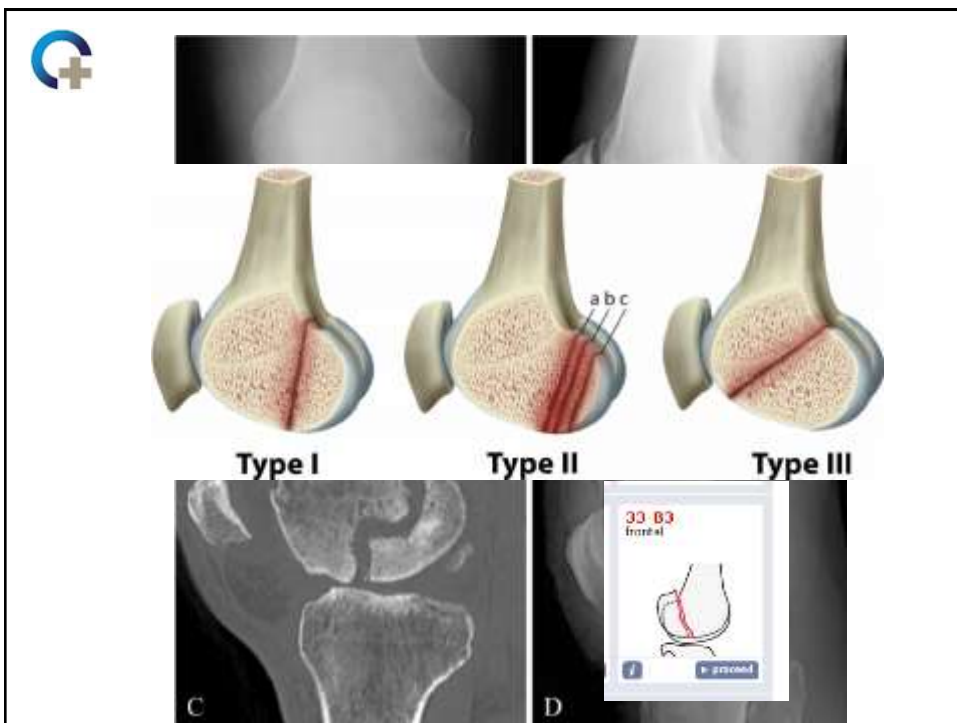
S



Extra articular	<b>33-A1</b> simple	<b>33-A2</b> metaphyseal wedge	<b>33-A3</b> metaphyseal complex
Partial articular	<b>33-B1</b> lateral sagittal	<b>33-B2</b> medial sagittal	<b>33-B3</b> frontal
Complete articular	<b>33-C1</b> simple	<b>33-C2</b> metaphyseal comminution	<b>33-C3</b> multifragmentary

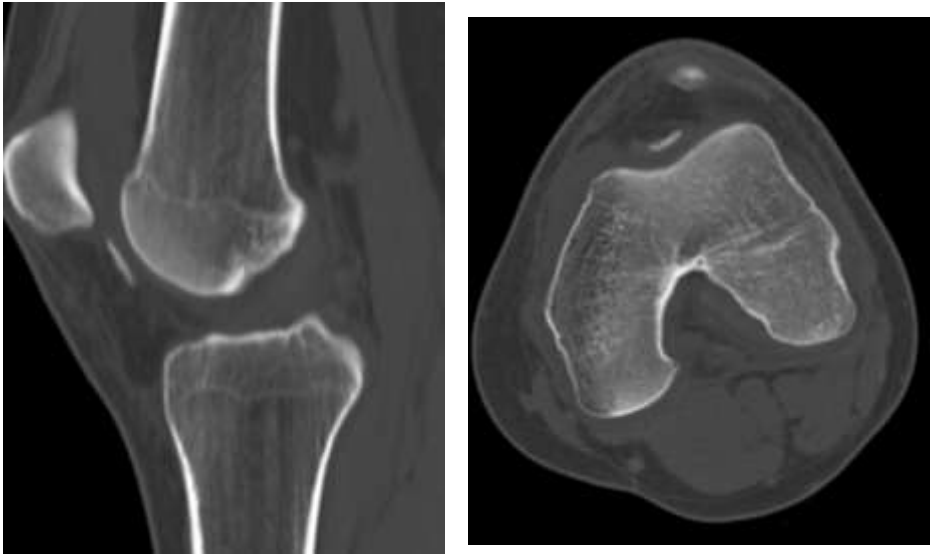




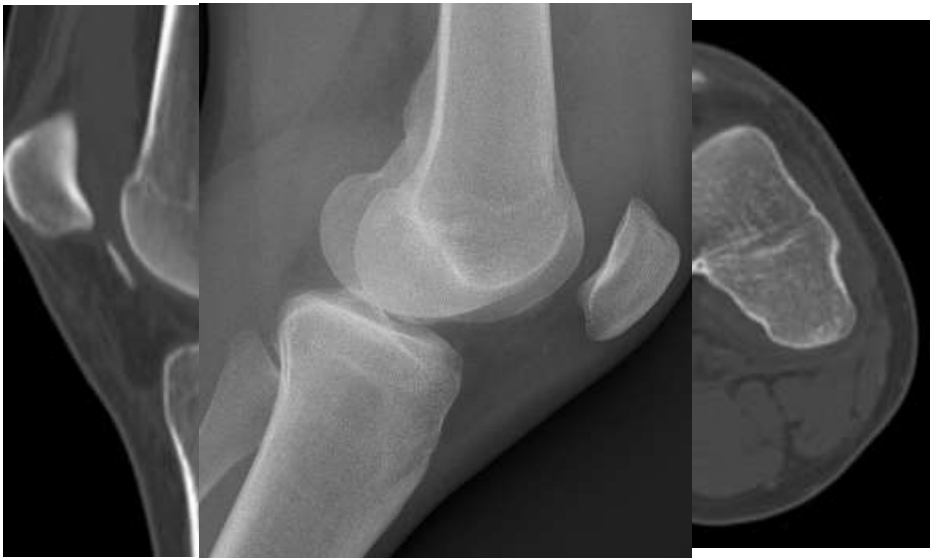




## Osteochondral fraktur



## Osteochondral fraktur





## Quadricepsseneruptur



## Avslutningsvis

- Rtg og CT av kne i en akutt setting
  - Rtg kne:
    - God primærundersøkelse
    - Lett tilgjengelig
  - CT kne:
    - Neg. rtg - mistanke om fraktur
    - Oversikt over frakturer – 3D volum